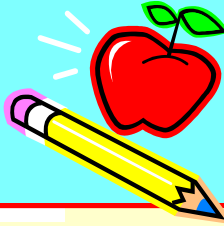




# ALDACOSTA'S ANNOUNCEMENTS



Mrs. Aldacosta  
[Kaldacosta@wcpss.net](mailto:Kaldacosta@wcpss.net)  
919-870-4200  
[www.Kaldacosta.weebly.com](http://www.Kaldacosta.weebly.com)

August 31, 2018

## General Updates

**Beginning of the Year** - We have had an amazing start of the school year. I am proud of how well our class has shown PRIDE in all areas of the school. Thank you for sharing your kiddos with us this year!

**Snacks:** Our policy for snacks is that the students can eat as they need to from 8:45am – 11:00 and at dismissal. Please help your child plan accordingly.

**Forms:** If you have not returned your colored forms, please do so ASAP.

**Scholastic News:** Scholastic News is \$7. You can now pay online through the school website under Resources – Pay for Field Trips. You can also send in cash and checks made out to LES. We currently have 8 out of 17 students have paid for their subscriptions.

**Go, Play, Save Books** - We are having a class challenge/celebration if we get 100% of the books and/or money back by September 10<sup>th</sup>. Please help us with this goal.

## Upcoming Events

### No School - Holiday

Monday, September 3<sup>rd</sup>

### mClass Window Opens

Tuesday, September 4<sup>th</sup> – 25<sup>th</sup>

### LES Back to School Picnic

Thursday, September 7<sup>th</sup> 5-8pm

### Go, Play, Save Fundraiser Ends

Monday, September 10<sup>th</sup>

### Open House

Thursday, September 13<sup>th</sup> 5:30 - 7:30pm

### No School – Holiday

Wednesday, September 19<sup>th</sup>

### Early Release

Friday, September 28<sup>th</sup> 1:15pm

## PTA

### • Be Informed

o LES Family Picnic on Friday 9/7 from 5-8pm Come spend time with fellow LES families and enjoy food, music, inflatables, raffles and more!

o MemberHub: A communication tool for use throughout our school community. Registering with MemberHub does NOT obligate you to join the PTA or come to any meetings.

~ Already registered with MemberHub but do not receive emails? Please check your junk or spam folder, and mark the emails as "Not Junk"/"Not Spam". § Wish to receive PTA communications and/or register with MemberHub? Create a login and password to activate your account at:<http://les.memberhub.com/join/t2uft5>. •

### Be Involved

o Lead Classroom Parent in Your Child's Classroom- Consider serving as a lead parent in your child(ren)'s classroom. Each teacher needs to have one or two "go to" parents. Find a brief room parent description on our homepage... [lespta.com](http://lespta.com). To volunteer, please contact your teacher.

## Academic Highlights

### Reading

Readers select Just Right Books to read and then make a plan.

### Writing

Writers tell their stories on paper.

### Math

We use our math tools properly.

### Science or Social Studies

I can learn the rules and expectations of my school and community.

I can study matter.